

# Prep4King



- ✓ Online Tool, Convenient, easy to study.
- ✓ Instant Online Access
- ✓ Supports All Web Browsers
- ✓ Practice Online Anytime
- ✓ Test History and Performance Review
- ✓ Supports Windows / Mac / Android / iOS, etc.



- ✓ Installable Software Application
- ✓ Simulates Real Exam Environment
- ✓ Builds Exam Confidence
- ✓ Supports MS Operating System
- ✓ Two Modes For Practice
- ✓ Practice Offline Anytime



- ✓ Printable PDF Format
- ✓ Prepared by IT Experts
- ✓ Instant Access to Download
- ✓ Study Anywhere, Anytime
- ✓ 365 Days Free Updates
- ✓ Free PDF Demo Available



## Security & Privacy

We respect customer privacy. We use McAfee's security service to provide you with utmost security for your personal information & peace of mind.



## 365 Days Free Updates

Free update is available within 365 days after your purchase. After 365 days, you will get 50% discounts for updating.



## Money Back Guarantee

Full refund if you fail the corresponding exam in 90 days after purchasing. And Free get any another product.



## Instant Download

After Payment, our system will send you the products you purchase in mailbox in a minute after payment. If not received within 2 hours, please contact us.

<http://www.prep4king.com/>

aims to give you good guidance during the preparation for easy pass.

**Exam** : **300-209**

**Title** : **Implementing Cisco Secure  
Mobility Solutions**

**Vendor** : **Cisco**

**Version** : **DEMO**

**NO.1** An engineer is troubleshooting network issues and wants to check the Layer 2 connectivity between routers.

Which command must be run?

- A. show crypto ipsec sa
- B. show ip eigrp neighbors
- C. show crypto isakmp sa
- D. show cdp neighbor

**Answer:** D

**NO.2** Which purpose of configuring Perfect Forward Secret is true?

- A. For every negotiation of a new phase 1 SA, the two gateways generate a new set of phase 1 keys
- B. For every negotiation of a new phase 2 SA, the two gateways generate a new set of phase 2 keys
- C. For every negotiation of a new phase 1 SA, the two gateways generate a new set of phase 2 keys
- D. For every negotiation of a new phase 2 SA, the two gateways generate a new set of phase 1 keys

**Answer:** B

**NO.3** Which two operational advantages does GetVPN offer site-to-site IPsec tunnel in a private MPLS-based core network? (choose two)

- A. Packets carry original source and destination IP addresses, which allows for optimal routing of encrypted traffic
- B. Group Domain of interpretation protocol allows for homomorphic encryption, which allows group members to operate on message without decrypting them
- C. Key servers perform encryption and decryption of all the data in the network, which allows for tight security policies
- D. Traffic uses one VRF to encrypt data and a different one to decrypt data, which allows for multicast traffic isolation
- E. GETVPN is tunnel-less, which allows any group member to perform decryption and routing around network failures

**Answer:** A,E

**NO.4** Which two settings are required for static crypto map configuration? (Choose two.)

- A. Set transform-set
- B. Set security-association lifetime.
- C. Set peer
- D. Set pfs
- E. Set security-association level per-host

**Answer:** A,C

**NO.5** Refer to the exhibit.

```
interface Ethernet0
 nameif outside
 security-level0
 ip address 172.16.1.2 255.255.255.0
 !
interface Ethernet1
 nameif inside
 security-level100
 ip address 10.1.0.1 255.255.255.0
 !
object network InsideNet
 subnet 10.7.7.0 255.255.255.0
 !
object network RemoteNet
 subnet 10.8.8.0 255.255.255.0
 !
nat (inside,outside) source static InsideNet InsideNet destination static RemoteNet RemoteNet
 !
access-list cmap10 extended permit ip object InsideNet object RemoteNet
 !
route outside 0.0.0.0 0.0.0.0 172.16.1.1
 !
crypto ipsec ikev1 transform-set AES256 esp-aes-256 esp-sha-hmac
 !
crypto ikev1 policy 10
 authentication pre-share
 encryption 3des
 hash sha
 group 2
 lifetime 86400
 !
crypto map cmap 10 match address cmap10
crypto map cmap 10 set peer 172.17.1.1
crypto map cmap 10 set ikev1 transform-set AES256
 !
tunnel-group 172.17.1.1 type ipsec-l2l
tunnel-group 172.17.1.1 ipsec-attributes
 ikev1 pre-shared-key Cisco123
```

An engineer is troubleshooting this configuration. Why is the VPN tunnel not functioning?

- A. AES 256 can't be used with IKEv1
- B. IKEv1 is not enabled
- C. The IKEv1 policy number should be at least 256
- D. There should be route for the 10.8.8.0/24 network configured

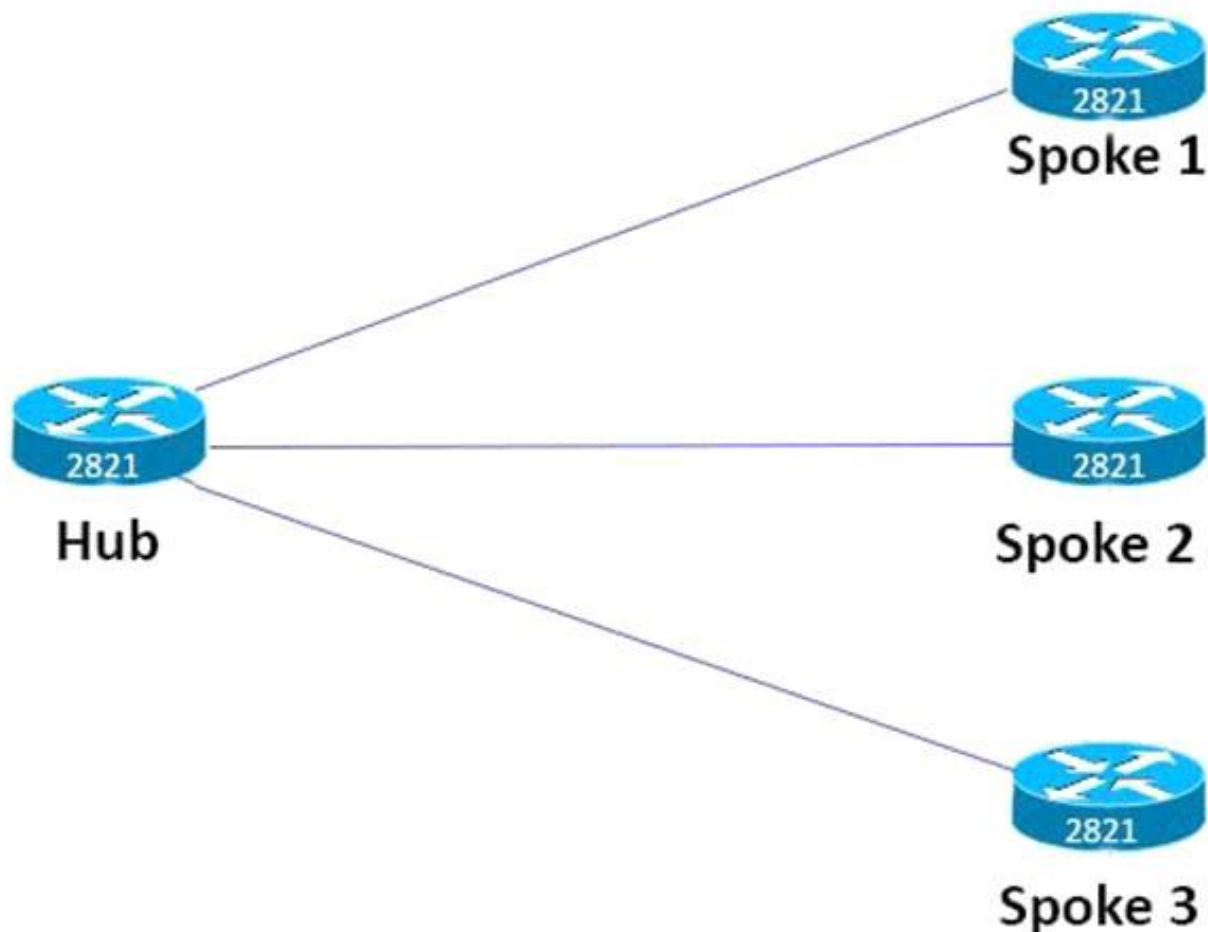
**Answer:** B

Explanation

The below command is missing from the configuration, which is essential to enable IKEv1 on ASA  
crypto map cmap 10 interface outside

<https://www.cisco.com/c/en/us/support/docs/security-vpn/ipsec-negotiation-ike-protocols/119425-configureipsec>

**NO.6** Refer to the exhibit.



In this tunnel mode GRE multipoint example, which command on the hub router distinguishes one spoke from the other?

- A. Ip nhrp map
- B. Tunnel mode gre multipoint
- C. No ip route
- D. Ip frame relay map

**Answer:** A

**NO.7** Which command clears all Cisco AnyConnect VPN sessions on a Cisco Adaptive Security Appliance?

- A. Vpn-sessiondb logoff webvpn
- B. Vpn-sessiondb logoff anyconnect
- C. Clear crypto isakmp sa
- D. Vpn-sessiondb logoff I2I

**Answer:** B

**NO.8** A Client has asked an engineer to assist in installing and upgrading to the latest of Cisco Any Connect Secure Mobility Client, Which type of deployment method require the updated version of the client to be loaded only on the headend device such as an ASA or ISE device?

- A. cloud update
- B. web-update
- C. predeploy
- D. Web deploy
- E. cloud deploy

**Answer:** D

**NO.9** An engineer is configuring a site-to-site VPN tunnel. Which two IKEv1 parameters must match on both peers?(Choose two.)

- A. encryption algorithm
- B. access lists
- C. QoS
- D. hashing method
- E. encryption domains

**Answer:** A,D

**NO.10** A company remote location connect to the data centers via MPLS. A new request requires that unicast and traffic that exits the remote location be encrypted. Which non tunneled technology can be used to satisfy this requirement?

- A. EzVPN
- B. SSL
- C. GETVPN
- D. DMVPN

**Answer:** C

**NO.11** Which two options are the purposes of the key server in Cisco IOS GETVPN?

(Choose two)

- A. To distribute dynamic routing information
- B. To distribute static routing information
- C. To encrypt transit data traffic
- D. To define and distribute security policies
- E. To authenticate group members

**Answer:** D,E

Explanation

[https://www.cisco.com/c/en/us/td/docs/ios-xml/ios/sec\\_conn\\_getvpn/configuration/xs-3s/sec-get-vpn-xe-3sbooksec-get-vpn.html](https://www.cisco.com/c/en/us/td/docs/ios-xml/ios/sec_conn_getvpn/configuration/xs-3s/sec-get-vpn-xe-3sbooksec-get-vpn.html)

**NO.12** An engineer is troubleshooting DMVPN and wants to check if traffic flows in only one direction. Which command accomplishes this task?

- A. show crypto ikev2 sa

- B. show crypto isakmp sa
- C. show crypto ipsec sa
- D. show crypto engine accelerator statistics

**Answer:** C